



# Arlington Meadows

— P A R I S —



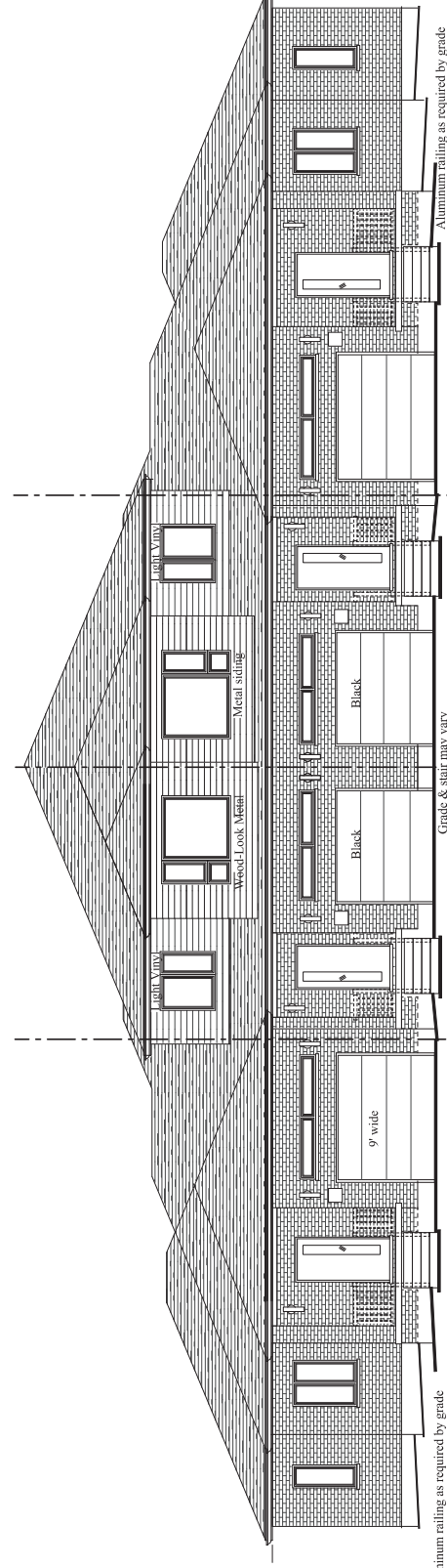
Exterior designs may vary to suit plans.

**LOTS 83 - 86 ELSON ST., PARIS**

We reserve the right to change specifications, designs, prices, and substitute materials of similar quality without notice and without incurring obligation. All information here in after is from data available at the time of printing. All measurements are approximate and may vary during construction. Plans and elevations may show options available at an extra cost. E.&O.E. Printed December 16, 2024 8:23 PM

**19'8"**  
**Town**

**34'**  
**Town**



Aluminum railing as required by grade

**Lot 83**  
1422 sq. ft.

**Lot 84**  
1530 sq. ft.

**Lot 85**  
1522 sq. ft.

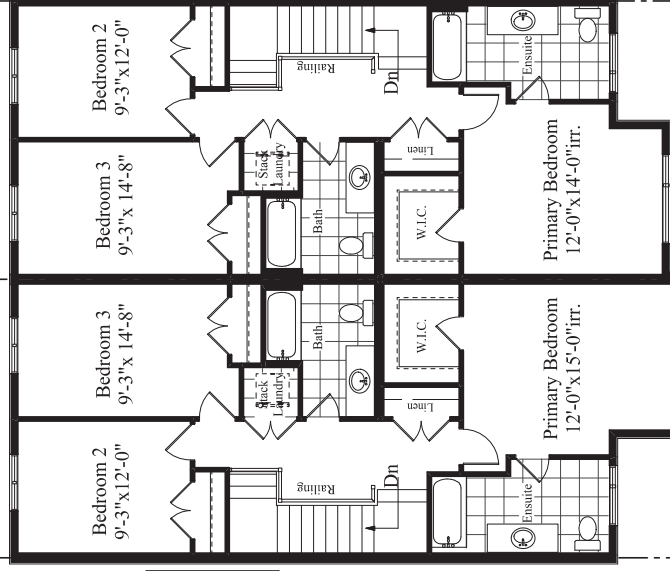
**Lot 86**  
1422 sq. ft.

Grade & stair may vary

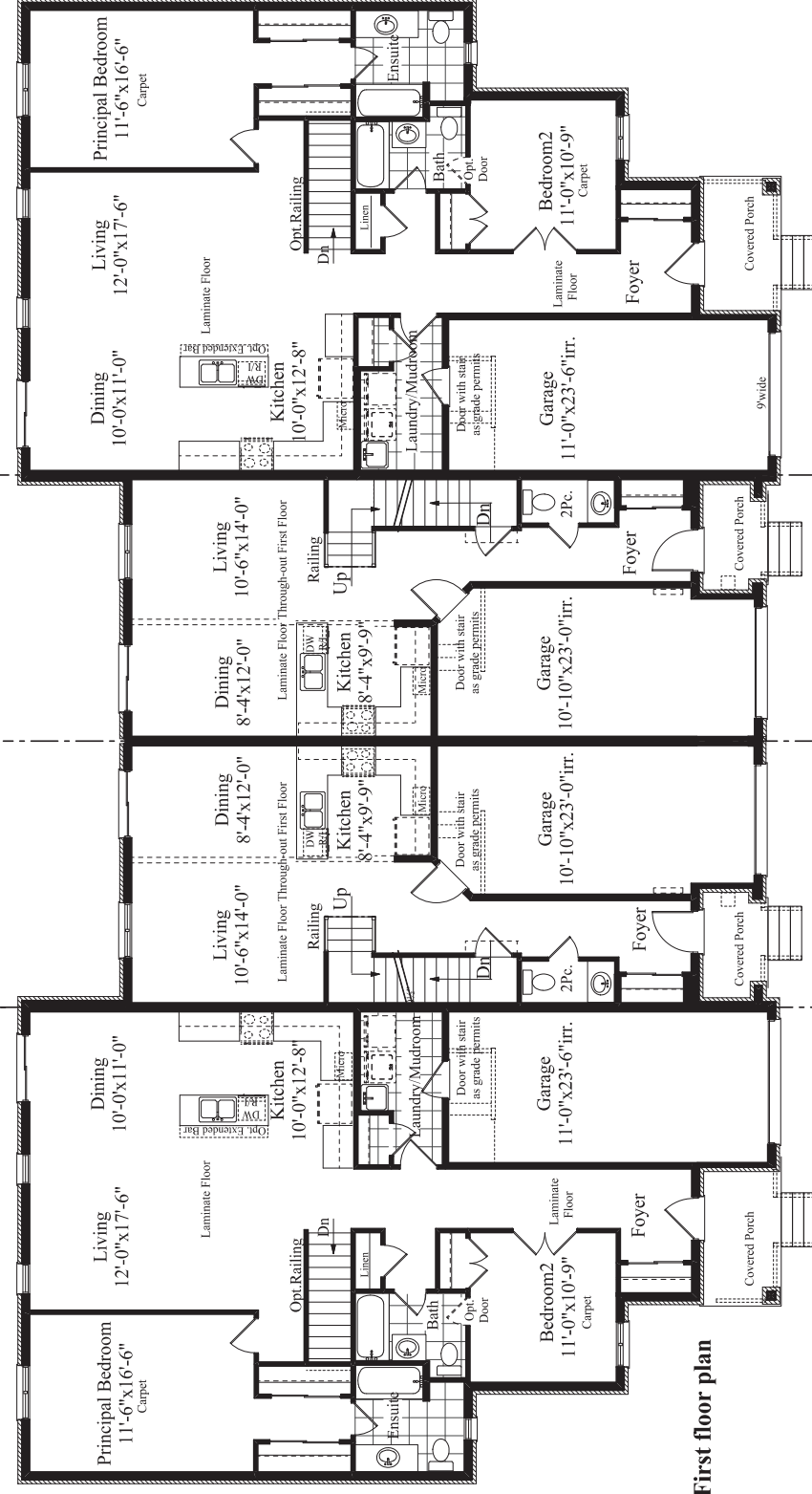
Aluminum railing as required by grade

Grade may vary to suit Subdivision design  
 Side and Rear walls : Brick on 1st floor & Horizontal Vinyl siding on 2nd floor  
 E. & O.E.- We reserve the right to change specifications, designs, prices or substitute materials of similar quality, without notice and without occurring obligation. All information here in after available at the time of printing. All measurements are approximate and may vary during construction. Heating ducts and plumbing may cause bulkheads throughout house.  
 (fir-irregular shape) Nov. 13/24

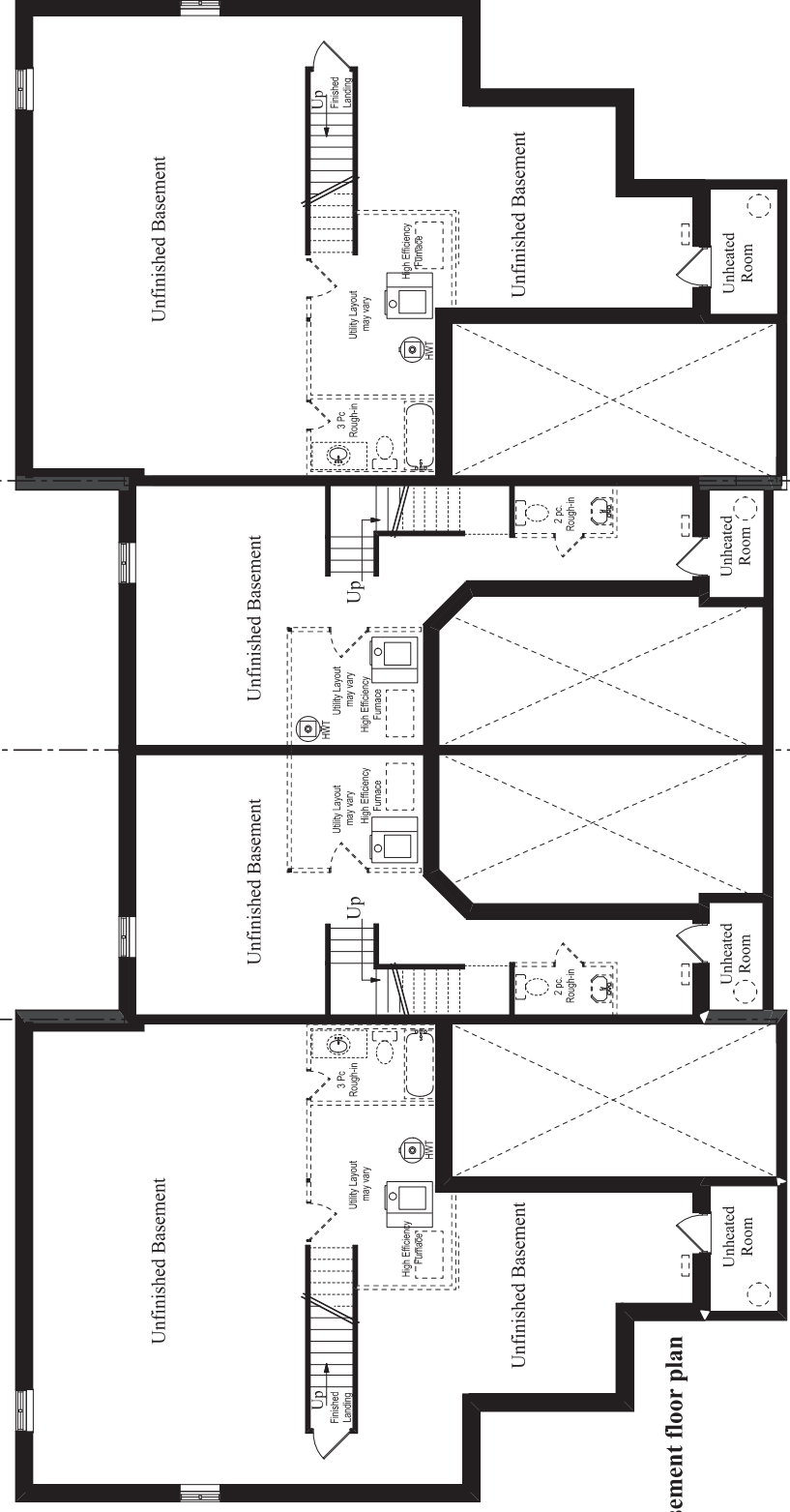
**Scale: N.T.S**  
**Architectural revisions must be done at offer stage.**



**Second floor plan**



**First floor plan**



**Basement floor plan**